

Bulkhead Terminal Lug

Description

The Bulkhead Terminal Lug transfers high current electrical power from the aircraft engine compartment into the aircraft cabin via a copper alloy bus bar. The device can survive an engine fire without losing its safety function through the use of high temperature ceramics. The unique design prevents fire or smoke from entering the aircraft cabin. Terminal Boots are available to cover the electrical terminals preventing accidental contact.

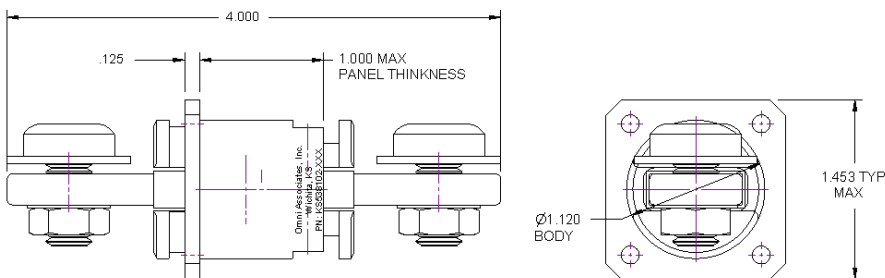
Specifications

Bus Bar Capacity: 350 Amp @ 86°F (30°C) Max Rise

Power: Aircraft 28 Vdc

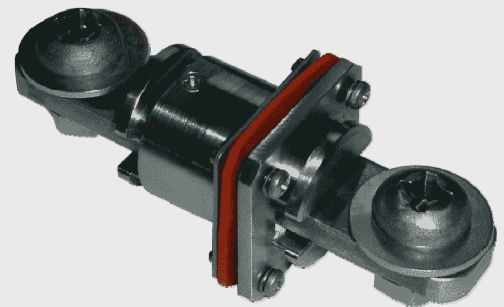
Weight: 0.625lbs (0.284kg)

Bulkhead Thickness: Metal or Composite up to 1.0in (25.4mm) thick



* Patent Pending

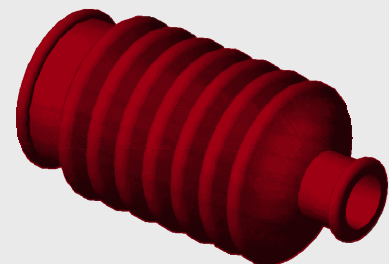
Omni Aerospace, Inc.
360 Cain Dr. Haysville, KS 67060
Phone: 316-529-8883 Fax: 316-529-8995



Bulkhead Terminal Lug *
PN: KS538102

FEATURES

- ✓ 350Amp Current Capacity
- ✓ Composite or Metal Bulkhead
- ✓ DO-160E Section 26.3 Cat. A Fire Test
- ✓ Pressure Bulkhead
- ✓ Up to 00 Gauge Wire
- ✓ Terminal Boots and mounting hardware available



Terminal Boot